



PROVEN PERFORMER

On-Premises Barrier Washer-Extractors SH180, SH240, SH280

Features

- Freestanding, high spin
- Complete stainless steel cabinet
- Stainless steel drum and tub
- QED Select – fully programmable
- Patented soap hopper
- Large drain valve (Ø 76 mm)
- Easy access to all important parts from all sides
- Large door opening for easy loading and unloading
- Automatic door positioning
- Liquid soap connection
- Perforated lifting ribs: more mechanical action and lower water consumption

Options

- USB plug and Network cable connection (on the side panel)
- Liquid soap pumps
- Second drain valve or recycle valve
- Steam heating version
- Water sample tap
- QED Assist – Laundry management software
- Second display
- Automatic weighing system by weighing cells to measure exact capacity of the linen
- Plinth for lateral draining
- Warning light based on traffic light system and horn



EASY OPERATION



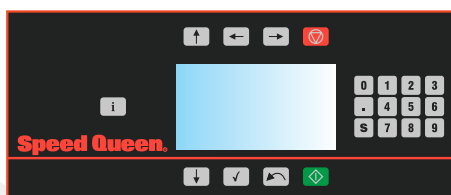
ERGONOMICAL CONSTRUCTION



COMPACT DESIGN



HYGIENIC SOLUTION



OPL control panel



SH180

	SH180	SH240	SH280
Innerdrum			
Capacity 10:0 kg	18	24	28
Capacity 9:1 kg	20	27	32
Volume litres	180	240	280
Diameter mm	750	750	750
Pockets standard or optional	1	1	1
Number of drums	1	1	1
Number of loading doors	1	1	1
Number of unloading doors	1	1	1
Motor			
Frequency controlled	Yes	Yes	Yes
Drum speed			
Washing speed rpm	42	42	42
Highest spin speed rpm	939	939	914
G-factor	370	370	350
Programmer			
Type of control	QED Select	QED Select	QED Select
Cabinet			
Stainless steel	Yes	Yes	Yes
Heating			
Electrical or Electrical additional kW	18	18	21.9
Steam bar	3 - 8	3 - 8	3 - 8
Connection			
Water inlet mm	3×19	3×19	3×19
Steam inlet mm	13	13	13
Drain mm	76	76	76
Compressed air inlet mm	n/a	n/a	n/a
Steam valve connection BSP	½"	½"	½"
Steam pressure k-Pa	300 - 800	300 - 800	300 - 800
Power			
Electrical requirements (without heating element) V Hz	1×200-240V 50/60Hz	1×200-240V 50/60Hz	1×200-240V 50/60Hz
Full load amps (without heating element) A	14.7	15.5	16.1
Breaker (without heating element) A	20	20	20
Electrical requirements (with heating element) V Hz	3×380-415V +N 50/60Hz	3×380-415V +N 50/60Hz	3×380-415V +N 50/60Hz
Full load amps (with heating element) A	31.9	31.9	40.6
Breaker (with heating element) A	32	32	50
Heating element kW	18	18	21.9
Transport data			
Gross weight kg	485	515	550
Net weight kg	430	460	490
Dimensions H×W×D mm	1455×900×1145	1455×1020×1145	1455×1130×1145
Packaging dimension H×W×D mm	1610×1010×1235	1610×1130×1235	1610×1240×1235
Volume m ³	2.0	2.3	2.5



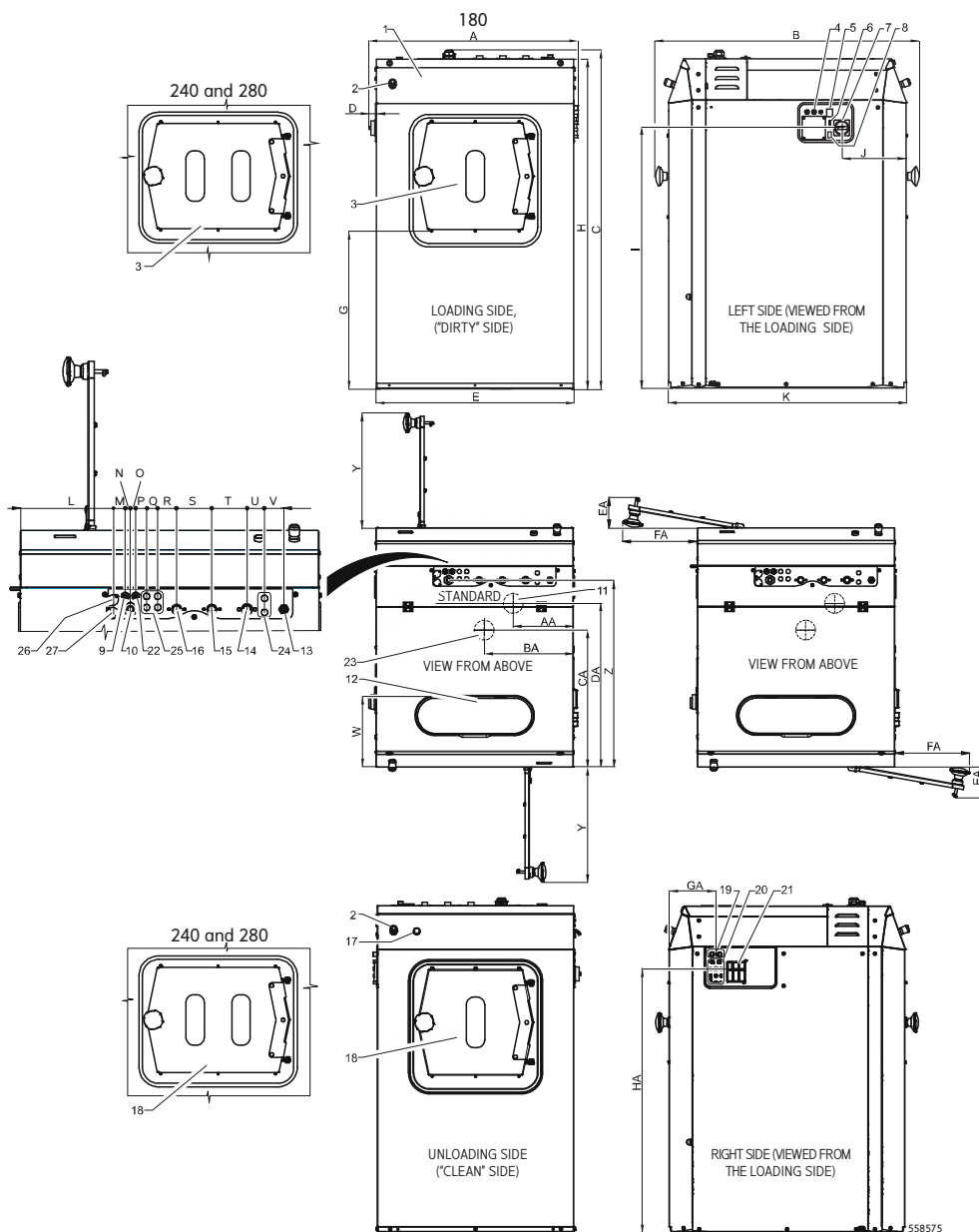
Dimensions

	A	B	C	C(1)	D	E	G	G(1)	H	H(1)	I	I(1)	J	K	L	M	N	O	P	
SH180	900					850	655	805												31
SH240	1020	1145	1455	1605	31	970	675	825	1423	1573	1127	1277	277	1025	263	35	15	15	76	
SH280	1130					1080	670	820							313				76	

	Q	R	S	T	U	V	W	Y	Z	AA	BA	CA	DA	EA	FA	GA	HA	HA(1)
SH180		54			50			496		259	384			149	321			
SH240	32	99	100	100	80	55	300	619	803	252	397	588	703	170	442	202	1150	1300
SH280		104			135			619		269	414				387			

All measurements in mm.

(1) Version with weighing system or with a steel base.



- 1 Control panel
- 2 Emergency stop button 'CENTRALSTOP'
- 3 Door for loading dirty laundry (outer door), ie the 'dirty side', door opening (w x h):
180: 376x325
240-280: 496x325
- 4 Main switch
- 5 Heating change-over switch (electric heating, steam heating), on request
- 6 USB port (on request)
- 7 Fuses
- 8 PC programming connection (RS485), on request
- 9 Electrical connection to liquid soap pumps
- 10 Electrical supply connection
- 11 Drain (standard 1 x 3")
- 12 Soap dispenser
- 13 Steam connection (steam version) 1/2"
- 14 Cold water soft
- 15 Cold water hard
- 16 Hot water
- 17 Signal of machine running
- 18 Door for removing clean laundry (outer door), ie the 'clean side'
- 19 Inlet of water from the recycle (external diameter 19)
- 20 Connection liquid soap
- 21 Air relieve
- 22 Cable inlet - cable for control of the valve or pump of water from the water recycle (on request for water recycle)
- 23 Drain into the water recycle
- 24 Additional inlets of liquid soap detergents, place on the panel
- 25 Lubrication system - external placement (on request)
- 26 Connector for connecting visual end of cycle indication, unloading side
- 27 Connector for connecting visual end of cycle indication, loading side

